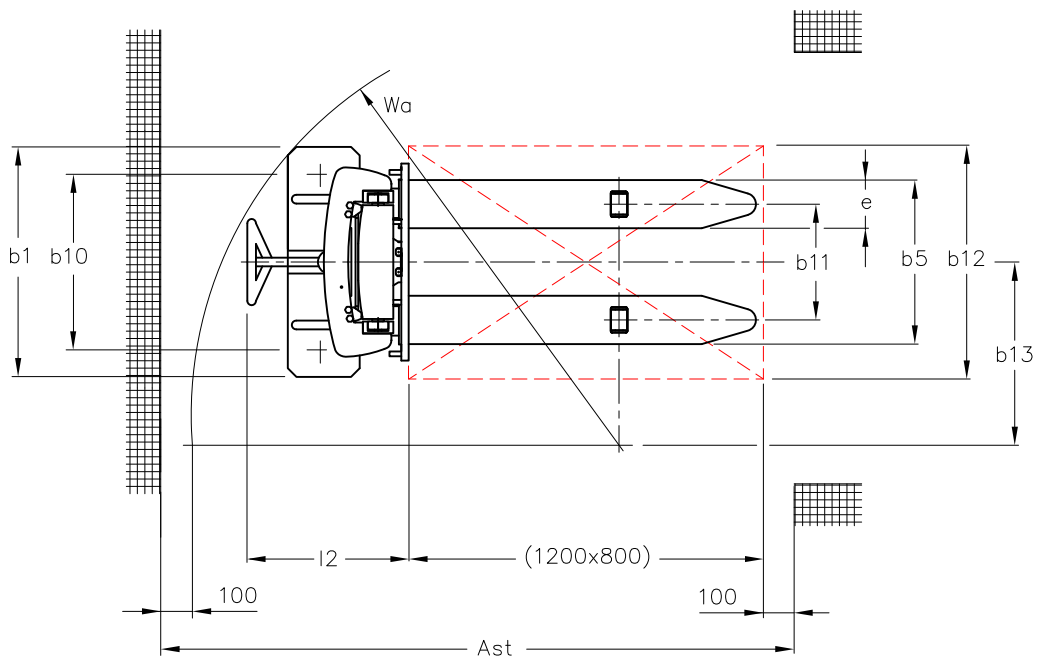
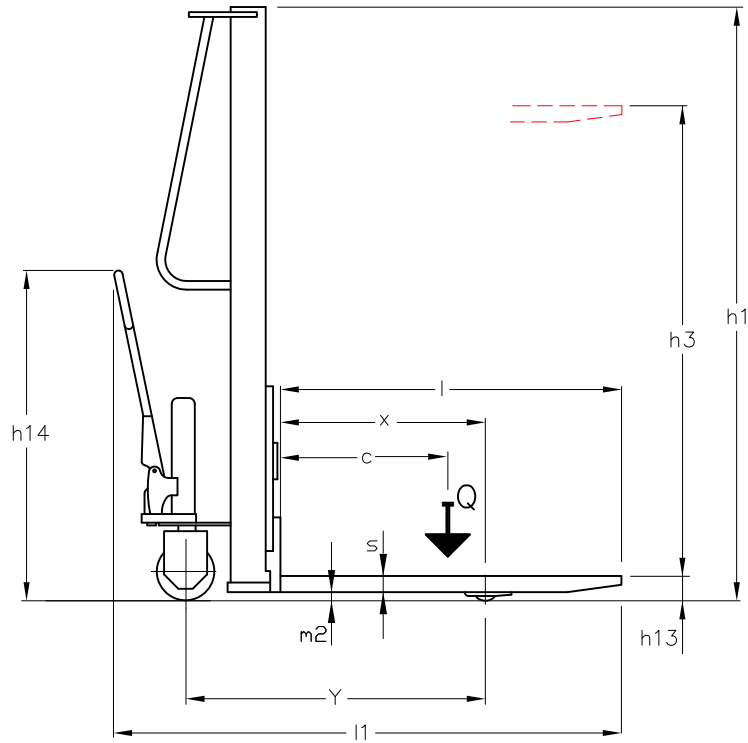


## Hand Operated Pallet Stacker KBX 1000/1,6

Type sheet for industrial Trucks according to VDI 2198

		<b>VENI</b>			
Characteristics	1.1	Manufacturer			<b>KBX 1000/1,6</b>
	1.2	Manufacturer's type designation			Hand towed
	1.4	Operation			Manual Lifting/Lowering
	1.5	Load capacity	<b>Q</b>	(kg)	<b>1000</b>
	1.6	Load centre	<b>c</b>	(mm)	600
	1.8	Axle centre to fork face	<b>x</b>	(mm)	690
	1.9	Wheelbase	<b>y</b>	(mm)	1060
Weight	2.1	Service weight incl. battery		(kg)	230
Wheels/tyres	3.1	Tyres front/rear Polyurethane (PU) , Polyamide (PA)			PU/PA
	3.2	Tyre size, front		(mm)	D 200x50
	3.3	Tyre size, rear		(mm)	D 82x70
	3.5	Wheels, number front / rear (x=driven)		(mm)	2/2
	3.6	Track width, front	<b>b<sub>10</sub></b>	(mm)	688
	3.7	Track width, rear	<b>b<sub>11</sub></b>	(mm)	400
Dimensions	4.2	Height, mast lowered	<b>h<sub>1</sub></b>	(mm)	1990
	4.3	Free lift	<b>h<sub>2</sub></b>	(mm)	-
	4.4	Lift	<b>h<sub>3</sub></b>	(mm)	1510
	4.5	Height, mast extended	<b>h<sub>4</sub></b>	(mm)	-
	4.9	Height of tiller in drive position min./max.	<b>h<sub>14</sub></b>	(mm)	1160
	4.15	Fork height, lowered	<b>h<sub>13</sub></b>	(mm)	90
	4.151	Fork height, lifted	<b>h<sub>3</sub>+h<sub>13</sub></b>	(mm)	1600
	4.19	Overall length	<b>l<sub>1</sub></b>	(mm)	1800
	4.20	Length to fork face	<b>l<sub>2</sub></b>	(mm)	650
	4.21	Overall width	<b>b<sub>1</sub></b>	(mm)	800
	4.22	Fork dimensions	<b>s/e/l</b>	(mm)	55/165/1150
	4.25	Overall forks width	<b>b<sub>5</sub></b>	(mm)	560
	4.32	Ground clearance, centre of wheelbase	<b>m<sub>2</sub></b>	(mm)	40
	4.34	Aisle width with pallet 800x1200 mm along forks	<b>Ast</b>	(mm)	2410
4.35	Turning radius	<b>Wa</b>	(mm)	1700	
4.36	Internal turning radius	<b>b<sub>13</sub></b>	(mm)	840	



VDI 2198 - Four wheel Forklift Truck top view,  
reduced load width -  $b_{12} / 2 \leq b_{13}$